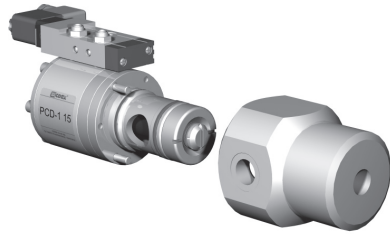


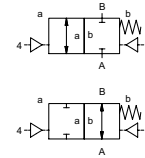
5-PCD-1 15
5-PCD-2 15
valve type with pilot valve

lateral valve

type PCD-1 15 PCD-2 15



2/2 way valve externally controlled
pressure range PN 0-200 bar
orifice DN 15 mm
connection thread/cartridge
function valve normally closed symbol **NC**
valve normally open symbol **NO**



△ Above stated body materials refer to the valve port connections that get in contact with the media only!

design pressure balanced, with spring return
body materials ① aluminium ③
① brass ④
② stainless steel ⑥
valve seat synthetic resin on metal metal on metal
seal materials PU, NBR PTFE, PE, FPM, EPDM

details needed for main valve

- orifice
- port
- function NC/NO
- operating pressure/Δp
- flow rate
- media
- media temperature
- ambient temperature
- type of actuation

details needed for pneumatic actuation

- nominal voltage
- type of protection
- actuation pressure range min/max
- low wattage coil, actuation pressure range 4-7 bar
- pilot valve type

details needed for hydraulic actuation

- actuation pressure range min/max
- hydraulic control valve function

	general specifications		options
ports	PCD-1 without valve body	PCD-2 without valve body	with valve body thread G 1/2 - G 3/4 with valve body thread G 1/2 - G 3/4
function	NC	NO	NO
pressure range	bar	0-200 (see pressure diagram)	NO (see pressure-diagram)
Kv value	m ³ /h	6,0	
vacuum	leak rate		< 10 ⁻⁶ mbar·l·s ⁻¹
pressure-vacuum	P ₁ ↔ P ₂		available upon request
back pressure	P ₂ > P ₁		available upon request
media			gaseous - liquid - highly viscous - gelatinous - pasty
abrasive media			
damping	opening		
	closing	by throttles on pilot valve	
flow direction	A ↔ B	as marked	bi-directional upon request
switching cycles	1/min	300	
switching time	ms	opening 100-3000 closing 100-3000	
media temperature	°C	direct mounted pilot valve 60	remote mounted pilot valve outside tempera- ture range of media max.150°C
ambient temperature	°C	direct mounted pilot valve 50	
flush ports			
leak ports			available
limit switches			inductive
manual override		via 5/2-way pilot valve	
approvals			WAZ
mounting			mounting holes on valve body 2 x M8
weight	kg	PCD-1 1,8 PCD-2 2,1	PCD-1 2,9 PCD-2 3,2
additional equipment			valve body

	electrical specifications		options
nominal voltage	U _n	DC 24V	special voltage upon request
	U _n	AC 230V 50 Hz	special voltage upon request
power consumption	DC	4,8 W	2,5 W
	AC	pick up 11,0 VA holding 8,5 VA	
protection	IP 65 (P54)	acc. DIN 40 050	
energized duty rating	ED	100%	
connection		plug acc. DIN EN 175301-803 form B, 4 positions x 90° / wire diameter 6-8 mm	
additional equipment		illuminated plug with varistor	
optional	M12x1	connector acc. DESINA	connector acc. VDMA
max. temperature	media	60°C	
	ambient	50°C	
explosion proof	EEx m II T5	nominal voltage U _n	direct current 24 V 3,25 W
		power consumption	alternating current 230 V 50 Hz 2,90 W

	pneumatic specifications		options
actuation pressure range	bar	4-10	
air consumption	cm ³ /stroke	PCD-1 14 PCD-2 36	
cycle speed	main valve speed	variable by throttles on pilot valve	
control		by 5/2-way pilot valve	
actuator ports	2/4	G 1/8	

	hydraulic specifications		options
actuation pressure range	bar	10-30	>30 bar upon request
by media			
control		preferably 4/2-way control valve	
actuator ports	XY	G 1/4 via adapter	NPT 1/4 via adapter

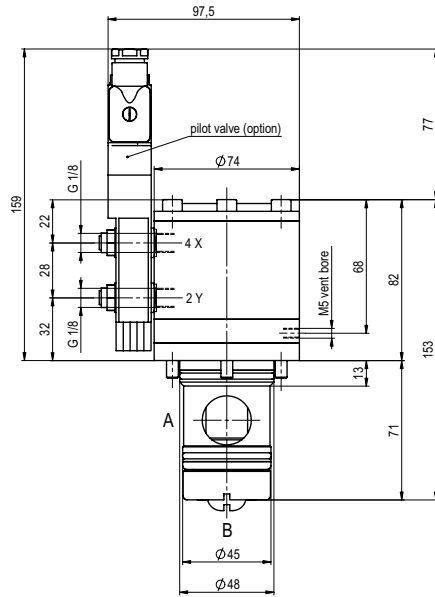
⚠ The valves' technical design is based on media and application requirements. This can lead to deviations from the general specifications shown on the data sheet with regards to the design, sealing materials and characteristics.

⚠ If order or application specifications are incomplete or imprecise there exists a risk of an incorrect technical design of the valve for the required application. As a consequence, the physical and / or chemical properties of the materials or seals used, may not be suitable for the intended application.

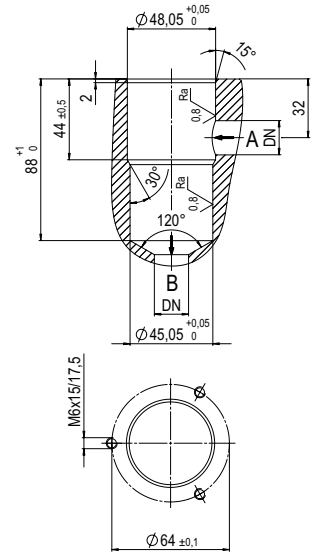
■ specifications not highlighted are standard
■ specifications highlighted in grey are optional

type PCD-1 15

function: **NC**
closed when not energized

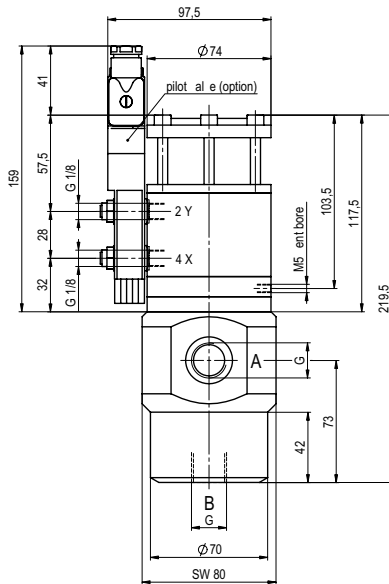


drilling design for cartridge

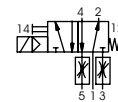


type PCD-2 15

function: **NO**
open when not energized

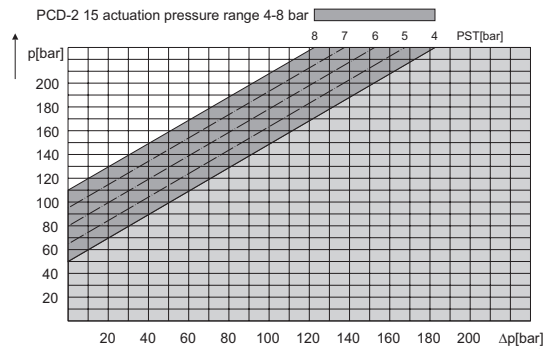
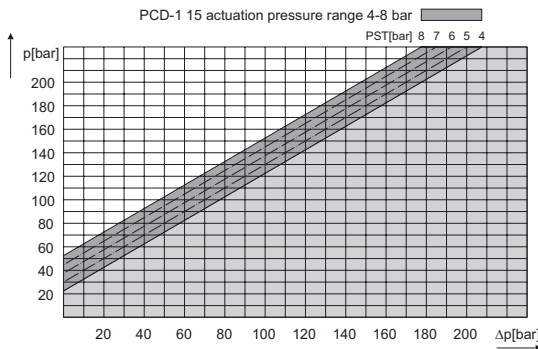


pneumatic actuation (separately)



5/2-way-pilot valve
flow rate 350 l/min
pressure range 3-10 bar G 1/8

pressure-diagram



The application-specific layout relating to temperature, pressure conditions, switching behavior, media and its consistency may restrict the range of use or necessitate relevant modifications to materials used and seal arrangements.

Rights reserved to make technical alterations • Not responsible for printing errors • Detailed drawings can be obtained upon request