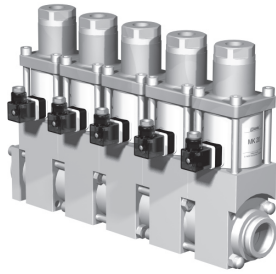
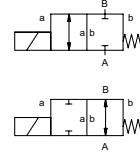


module type MK 10 - MK 25



2/2 way valve **direct acting**
pressure range PN 0-40 bar / 0-100 bar
orifice DN 10-25 mm
connection thread
function valve normally closed symbol **NC**
 valve normally open symbol **NO**



△ Above stated body materials refer to the valve port connections that get in contact with the media only!

details needed

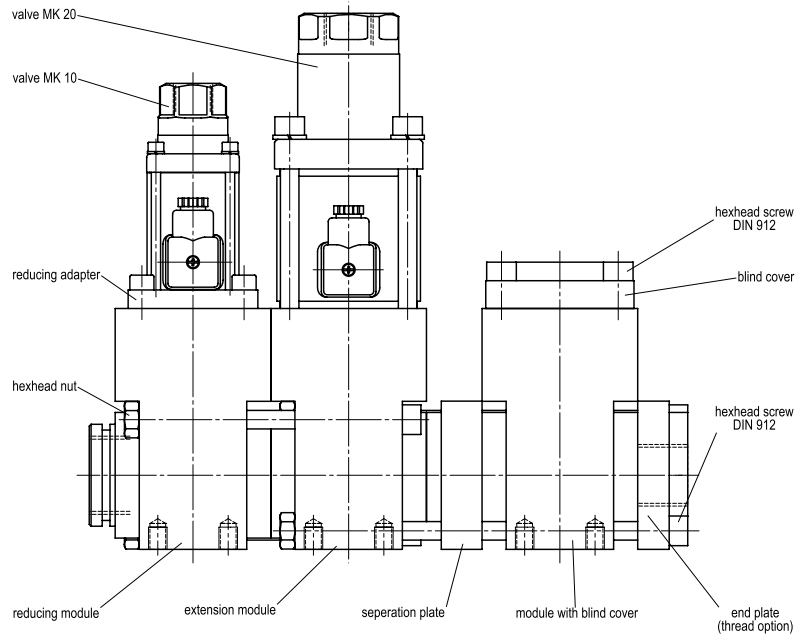
- orifice
- port
- function NC/NO
- operating pressure
- flow rate
- media
- media temperature

general specifications

type	MK 10	MK 15	MK 20	MK 25
port thread valve	G 1/4 - 3/4	3/8 - 3/4	3/4 - 1 1/4	1 - 1 1/2
port thread module	G 1	1	1 1/4	1 1/2
function	NC / NO	NC / NO	NC / NO	NC / NO
pressure range	bar 0-16 / 40	0-16 / 40 / 64 / 100	0-16 / 40 / 64 / 100	0-16 / 40 / 64 / 100
orifice	DN 10	15	20	25
media	gaseous - liquid - contaminated			
media temperature	°C -30 to +120	-40 to +160	-40 to +160	-40 to +160
switching time	ms opening 25	opening 80	opening 110	opening 130
	closing 25	closing 80	closing 110	closing 130
body materials valve	① brass	② steel, galvanized	③ steel, galvanized	④ steel, galvanized
	⑤ brass, nickel plated	⑥ brass, nickel plated	⑦ brass, nickel plated	⑧ brass, nickel plated
	⑨ steel, nickel plated	⑩ steel, nickel plated	⑪ steel, nickel plated	⑫ steel, nickel plated
body materials module	⑬ stainless steel	⑭ stainless steel	⑮ stainless steel	⑯ stainless steel
	⑰ aluminium	⑱ aluminium	⑲ aluminium	⑳ aluminium
seal materials	NBR, PTFE, FPM, CR, EPDM			
valve seat	synthetic resin on metal			
design	pressure balanced with spring return			

⚠ The valves' technical design is based on media and application requirements. This can lead to deviations from the general specifications shown on the data sheet with regards to the design, sealing materials and characteristics.

⚠ If order or application specifications are incomplete or imprecise there exists a risk of an incorrect technical design of the valve for the required application. As a consequence, the physical and / or chemical properties of the materials or seals used, may not be suitable for the intended application.



■ specifications not highlighted are standard
 ■ specifications highlighted in grey are optional

type module MK 10 - MK 25

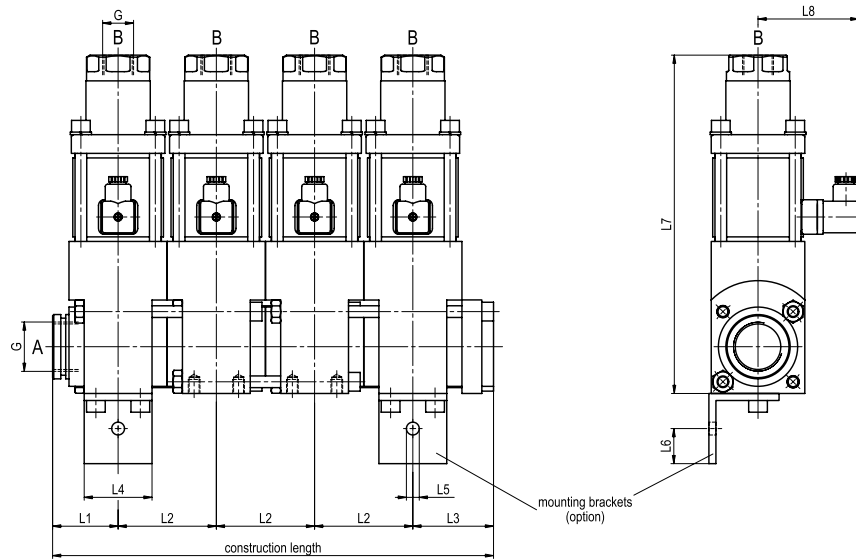


chart with dimensions

type	L1	L2	L3	L4	L5	L6	L7	L8	L9
MK 10	36,5	53	38,5	38	ø8,5	20	186	72	16
MK 15	46	72	64	52	ø9	30	247	81	14
MK 20	56	84	69	58	ø11	30	290	86	22
MK 25	61	94	84	68	ø11	30	339	92	22

chart with overall length

type	1-station	2-station	3-station	4-station	5-station	6-station	7-station	8-station
MK 10	75	128	181	234	287	340	393	446
MK 15	110	182	254	326	398	470	542	614
MK 20	125	209	293	377	461	545	629	713
MK 25	145	239	333	427	521	615	709	803

