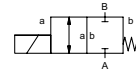


coaxial valve

type KB 15



2/2 way valve direct acting
pressure range PN 0-400 bar
orifice DN 2-8 mm
connection thread
function valve normally closed
symbol NC



△ Above stated body materials refer to the valve port connections that get in contact with the media only!

design direct acting, with spring return
body materials ⑧ 1.4104/steel, nickel plated ②
 ③ ⑤
 ④ ⑥ stainless steel,
valve seat synthetic resin on metal steel nickel plated
seal materials NBR, PTFE FPM

details needed

- orifice
- port
- function NC
- operating pressure
- flow rate
- media
- media temperature
- ambient temperature
- nominal voltage

general specifications

options

ports	KB	threads G 3/8	special threads
function	NC (1-coil operation)		NC (2-coil operation)
pressure range	bar	30 50 80 120 250 300	40 70 100 150 300 400
	DN	8 6 5 4 3 2	8 6 5 4 3 2
Kv value	l/min	24,0 17,4 13,5 11,0 4,1 1,7	24,0 17,4 13,5 11,0 4,1 1,7
vacuum	leak rate	< 10 ⁻⁶ mbar·l/s ¹	
pressure-vacuum	P ₁ ↔ P ₂	upon request	
back pressure	P ₂ > P ₁	upon request	
media	gaseous - liquid		
abrasive media			
damping	opening closing		
flow direction	A ↔ B	as marked	bi-directional upon request
switching cycles	1/min	260	370
switching time	ms	opening 60 closing 170	opening 40 closing 120
media temperature	°C	DC: -40 to +100 AC: -40 to +100	<-40°C / -196°C and >100°C upon request <-40°C / -196°C and >100°C upon request
ambient temperature	°C	DC: -40 to +80 AC: -40 to +80	
limit switches			
manual override			
approvals	WAZ		
mounting			
weight	kg	2,5	
additional equipment	upon request		

electrical specifications

options

nominal voltage	U _n	24 V DC	special voltage upon request
	U _n	230 V 40-60 Hz AC	special voltage upon request
actuation	DC	direct-current magnet	
	AC	direct-current magnet with integrated rectifier	above 100°C with separate rectifier
insulation rating	H	180°C	
protection	IP65		
energized duty rating	ED	100%	
connection		plug acc. DIN EN 175301-803 form A, 4 positions x 90° / wire diameter 6-8 mm	terminal box M16x1,5
optional additional equipment	M12x1	connector acc. DESINA illuminated plug with varistor	connector acc. VDMA
current consumption	1-coil-operation	24 V DC 1,60 A	24 V DC 2,30 A
	230 V 40-60 Hz AC	0,15 A	230 V 40-60 Hz AC 0,24 A
	2-coil-operation	pick up power	24 V DC 5,90 A / 230 V AC 0,76 A
		holding power	24 V DC 1,58 A / 230 V AC 0,16 A
explosion proof			
limit switches			

⚠ The valves' technical design is based on media and application requirements. This can lead to deviations from the general specifications shown on the data sheet with regards to the design, sealing materials and characteristics.

⚠ If order or application specifications are incomplete or imprecise there exists a risk of an incorrect technical design of the valve for the required application. As a consequence, the physical and / or chemical properties of the materials or seals used, may not be suitable for the intended application.

■ specifications not highlighted are standard
 ■ specifications highlighted in grey are optional

type **KB 15**

function: **NC**
closed when not energized

