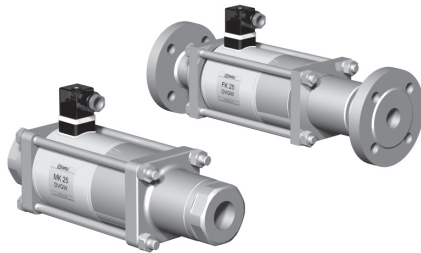
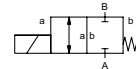


# coaxial valve

## type MK 25 DVGW FK 25 DVGW



**2/2 way valve** direct acting  
**pressure range** PN 0-40 bar  
**orifice** DN 25 mm  
**connection** thread/flange  
**function** valve normally closed  
**symbol** NC



**△** Above stated body materials refer to the valve port connections that get in contact with the media only!

**design** pressure balanced, with spring return  
**body materials** Ⓣ DVGW

**valve seat** synthetic resin on metal  
**seal materials** FPM, PTFE

**details needed**

- orifice
- port
- function NC
- operating pressure
- flow rate
- media
- media temperature
- ambient temperature
- nominal voltage

**general specifications**

**options**

<b>ports</b>	MK	threads G 1 - G 1 1/2	
	FK	flanges PN 40	
<b>function</b>		NC	
<b>pressure range</b>	bar	0-40	
<b>Kv value</b>	m <sup>3</sup> /h	11,2	
<b>vacuum</b>		leak rate	
<b>pressure-vacuum</b>	P <sub>1</sub> ↔ P <sub>2</sub>		
<b>back pressure</b>	P <sub>2</sub> > P <sub>1</sub>		
<b>media</b>		combustible gases according G 260	
<b>abrasive media</b>			
<b>damping</b>	opening		
	closing		
<b>flow direction</b>	A ↔ B	as marked	
<b>switching cycles</b>	1/min	130	
<b>switching time</b>	ms	opening 130 closing 130	
<b>media temperature</b>	°C	DC: -15 to +80	
		AC: -15 to +80	
<b>ambient temperature</b>	°C	DC: -15 to +80	
		AC: -15 to +80	
<b>limit switches</b>			inductive
<b>manual override</b>			available
<b>approvals</b>	DVGW	DIN 3394-1	
<b>mounting</b>			mounting brackets
<b>weight</b>	kg	MK 8,0 FK 10,5	
<b>additional equipment</b>			

**electrical specifications**

**options**

<b>nominal voltage</b>	U <sub>n</sub>	24 V	DC		special voltage
	U <sub>n</sub>	230 V	40-60 Hz	AC	special voltage
<b>actuation</b>	DC	direct-current magnet			
	AC	direct-current magnet with integrated rectifier			
<b>insulation rating</b>	H	180°C			
<b>protection</b>	IP65				
<b>energized duty rating</b>	ED	100%			
<b>connection</b>		plug acc. DIN EN 175301-803			terminal box M16x1,5
		form A, 4 positions x 90° / wire diameter 6-8 mm			
<b>optional additional equipment</b>		illuminated plug with varistor			
<b>current consumption</b>	N-coil				
	H-coil	24 V	DC	2,66 A	
		230 V	40-60 Hz	AC	0,36 A
<b>explosion proof</b>	E Ex e II T4	nominal voltage U <sub>n</sub>	V-DC	24 48 98 110 200 220	
		nominal current I <sub>n</sub>	A	1,79 0,95 0,47 0,40 0,21 0,19	
		media temperature	°C	-15 to +40	
		ambient temperature	°C	-15 to +40	
<b>limit switches</b>	AC connection				with separate rectifier
	inductive (I)				normally open-PNP
	inductive (B)				normally open-PNP
	Namur				circuit amplifier

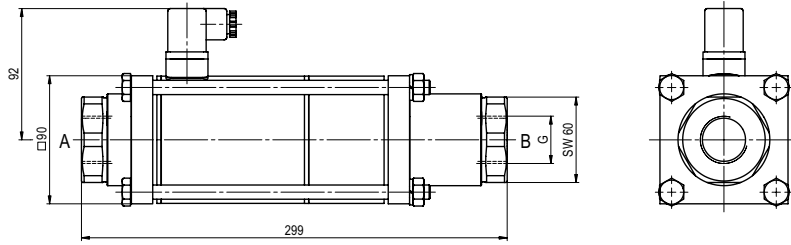
**⚠** The valves' technical design is based on media and application requirements. This can lead to deviations from the general specifications shown on the data sheet with regards to the design, sealing materials and characteristics.

**⚠** If order or application specifications are incomplete or imprecise there exists a risk of an incorrect technical design of the valve for the required application. As a consequence, the physical and / or chemical properties of the materials or seals used, may not be suitable for the intended application.

■ specifications not highlighted are standard  
 ■ specifications highlighted in grey are optional

# type MK 25 DVGW

function: **NC**  
closed when not energized



# type FK 25 DVGW

function: **NC**  
closed when not energized

