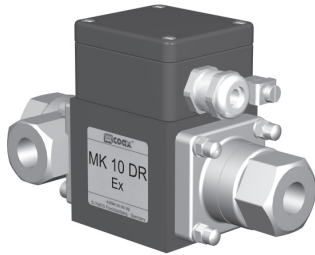
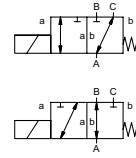


coaxial valve

type MK 10 DR Ex



3/2 way valve **direct acting**
pressure range PN 0-16 bar
orifice DN 10 mm
connection thread
function valve normally closed (A ► B) symbol **NC**
 valve normally open (A ► B) symbol **NO**



Above stated body materials refer to the valve port connections that get in contact with the media only!

design pressure balanced, with spring return, intersecting switch-over
body materials ① brass ② stainless steel
 ③ brass, nickel plated ⑤
 ④ ⑥ stainless steel
valve seat synthetic resin on metal
seal materials NBR PTFE, FPM, CR, EPDM

details needed

- orifice
- port
- function NC/NO
- operating pressure
- inlet pressure at A, B or C
- flow rate
- media
- media temperature
- ambient temperature
- nominal voltage

| | general specifications | options |
|-----------------------------|---|---|
| ports | MK threads G 1/4 - G 3/4 | special threads |
| function | NC | NO |
| pressure range | bar 0-16 | |
| | A ⇒ B max.16 / B ⇒ A max.16 / A ⇒ C max.16 / C ⇒ A max.16 | |
| Kv value | m³/h 2,6 | |
| vacuum | leak rate | < 10 ⁻⁶ mbar·l·s ⁻¹ |
| pressure-vacuum | P ₁ ⇔ P ₂ | upon request |
| back pressure | P ₂ > P ₁ | see pressure range |
| media | gaseous - liquid - contaminated | |
| abrasive media | | |
| damping | opening | |
| | closing | |
| flow direction | see pressure range | |
| switching cycles | 1/min 200 | |
| switching time | ms opening 80 closing 140 | |
| media temperature | °C DC: -30 to +40 | |
| | AC: -30 to +40 | |
| ambient temperature | °C DC: -30 to +40 | |
| | AC: -30 to +40 | |
| limit switches | | |
| manual override | | |
| approvals | LR/GL/WAZ | |
| mounting | mounting brackets | |
| weight | kg MK 2,2 | |
| additional equipment | upon request | |

The valves' technical design is based on media and application requirements. This can lead to deviations from the general specifications shown on the data sheet with regards to the design, sealing materials and characteristics.

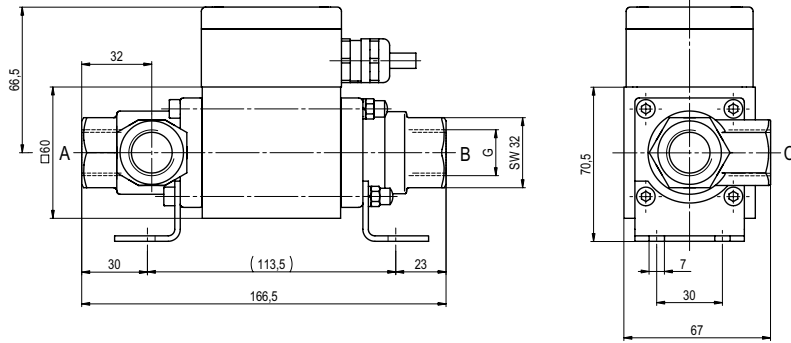
If order or application specifications are incomplete or imprecise there exists a risk of an incorrect technical design of the valve for the required application. As a consequence, the physical and / or chemical properties of the materials or seals used, may not be suitable for the intended application.

| | electrical specifications | options |
|--------------------------------------|--|-------------------------------|
| nominal voltage | U _n 24 V DC | special voltage |
| | U _n 230 V 40-60 Hz AC | special voltage |
| actuation | DC direct-current magnet | |
| | AC direct-current magnet with integrated rectifier | |
| insulation rating | H 180°C | |
| protection | IP65 | |
| energized duty rating | ED 100% | |
| connection | terminal box | |
| | 3 m flying leads | |
| optional additional equipment | | |
| current consumption | U _n V-AC/DC 24 230 | 20 48 98 110 125 200 |
| | I _n A 1,04 0,12 | 1,25 0,50 0,25 0,22 0,22 0,13 |
| explosion proof | II 2 G Eex m II T4 and II 2 D IP68 T 130°C PTB 03 ATEX 2045 X | |
| limit switches | | |

■ specifications not highlighted are standard
 specifications highlighted in grey are optional

type MK 10 DR Ex

function: **NC**
closed when not energized (A ► B)



type MK 10 DR Ex

function: **NO**
open when not energized (A ► B)

