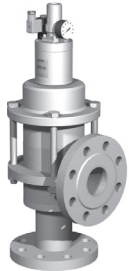


pressure limitation valve

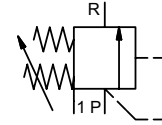
type HPB 65


3-HPB 65

valve type with pilot valve



control valve manuel
pressure range PN 0-64 bar
orifice DN 65 mm
connection flange
function manual
 stepless
 pressure regulation



 Above stated body materials refer to the valve port connections that get in contact with the media only!

design externally controlled with spring return
body materials ① ④
 ② steel, galvanized ⑤
 ③ ⑥
valve seat metal on metal
seal materials NBR FPM

details needed for main valve

- orifice
- port
- pressure regulating range
- flow rate
- media
- media temperature
- ambient temperature

details needed for pneumatic actuation

- nominal voltage
- type of protection
- actuation pressure range min/max

	ports	HPB	flanges PN 64
function	function		stepless regulation
	pressure regulation range	bar	5-64
Kv value	Kv value	m ³ /h	max. 60,0
	media		liquid - highly viscous - contaminated
abrasive media			
flow direction	P ⇌ R		as marked
operating time	ms		< 400
media temperature	°C		0 to +60
ambient temperature	°C		0 to +50
approvals			
mounting			
weight	kg		42,5
additional equipment			

general specifications

options

electrical specifications


options


nominal voltage	U _n	24V	DC	special voltage upon request
	U _n	230 V	50 Hz AC	special voltage upon request
power consumption	DC	4,8 W		2,5 W
	AC		pick up 11,0 VA holding 8,5 VA	
protection	IP 65 (P54)		acc. DIN 40 050	
energized duty rating	ED		100%	
connection			plug acc. DIN EN 175301-803 form B	
additional equipment			illuminated plug with varistor	
optional	M12x1	connector acc. DESINA		connector acc. VDMA
			3 positions x 90° / wire diameter 6-8 mm	
max. temperature	media		60°C	
	ambient		50°C	
explosion proof	EEx m II T5	nominal voltage U _n		direct current 24 V 3,25 W
		power consumption		alternating current 230 V 50 Hz 2,90 W

pneumatic specifications

options

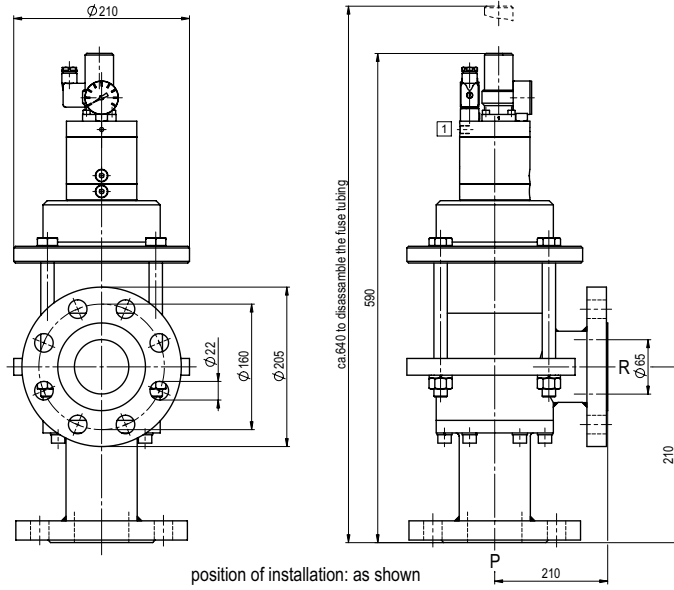
actuation pressure range	bar	see actuation pressure-diagram
air consumption		DIN ISO 8573-1 grade of compressed air quality 5/4/3
control		preferably 3/2-way pilot valve during low pressure circulation mode
actuator ports	1	G 1/8

 The valves' technical design is based on media and application requirements. This can lead to deviations from the general specifications shown on the data sheet with regards to the design, sealing materials and characteristics.

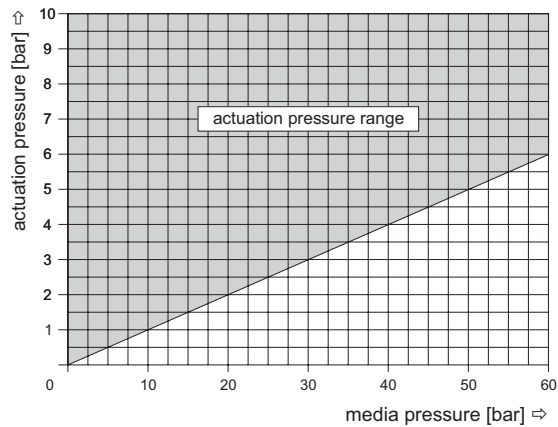
 If order or application specifications are incomplete or imprecise there exists a risk of an incorrect technical design of the valve for the required application. As a consequence, the physical and / or chemical properties of the materials or seals used, may not be suitable for the intended application.

■ specifications not highlighted are standard
 ■ specifications highlighted in grey are optional

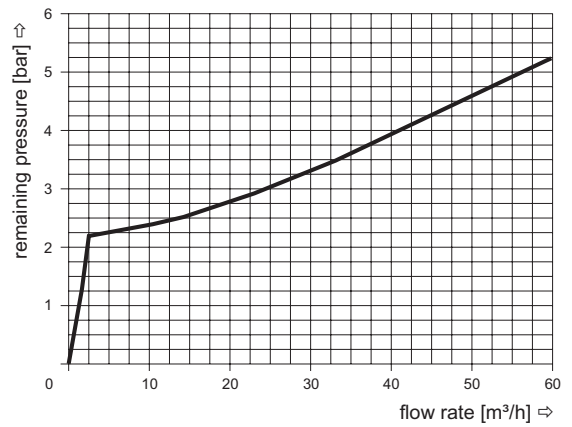
type HPB 65



actuation pressure-diagram



pressureless circulation mode



The application-specific layout relating to temperature, pressure conditions, switching behavior, media and its consistency may restrict the range of use or necessitate relevant modifications to materials used and seal arrangements.

Rights reserved to make technical alterations • Not responsible for printing errors • Detailed drawings can be obtained upon request